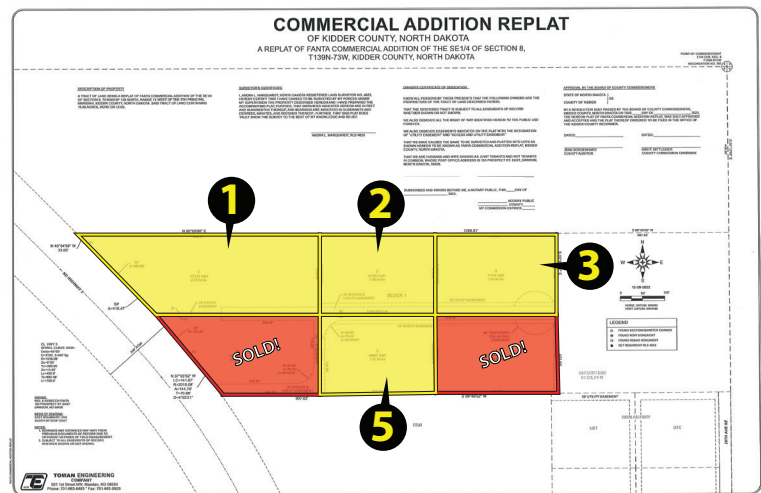
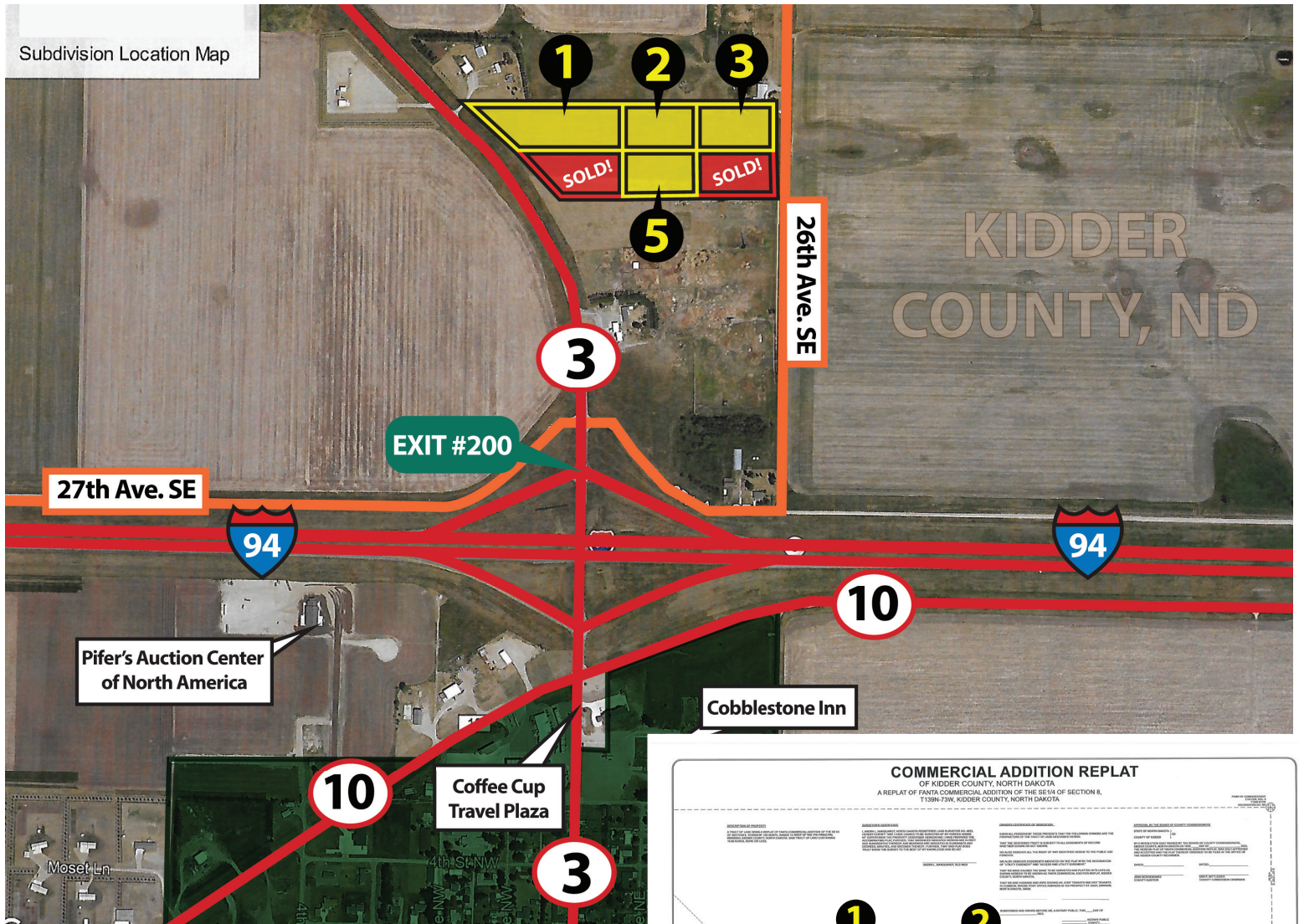


COMMERCIAL LOTS FOR SALE



Now Offering prime commercial lots for sale in Steele, ND. Enjoy excellent visibility from the interstate and prime frontage along Hwy 3 in a fantastic location. Plus, the lots are equipped for immediate connections with KEM Electric (Single and Three Phase Power) , MDU Natural Gas, Bek Fiber, and South Central Rural Water. Don't miss out on this chance to secure a top-tier site for your business!

PRICES STARTING AT: \$74,750

Lot 1: 2.70 Acres		Asking \$ 117,186
Lot 2: 1.55 Acres		Asking \$ 78,478
Lot 3: 1.63 Acres		Asking \$ 74,750
Lot 4: 1.65 Acres		SOLD!
Lot 5: 1.57 Acres		Asking \$78,487
Lot 6: 1.77 Acres		SOLD!

Pifer's

ABBEY MESSER

701.202.4646 | amesser@pifers.com

510 7th St. NW - Steele, ND 58482

